

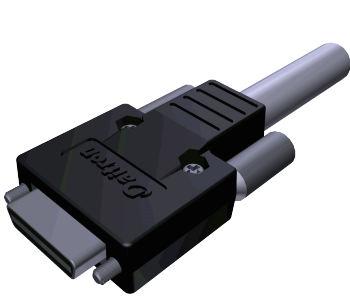
Camera Link Cable(Confirm)

RoHS Compliant

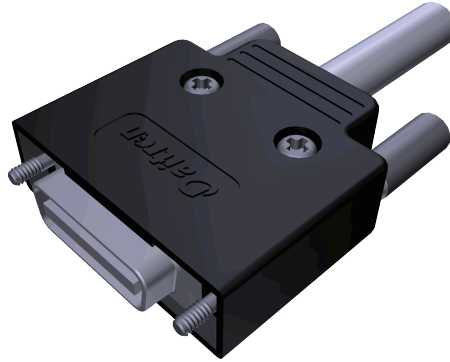
PoCL Compliant

HiFlex

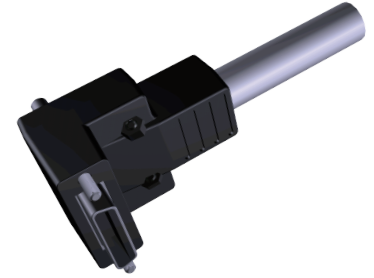
- Characteristic Impedance 100+/-10 ohm
- Skew (Within pair) 50ps/meter maximum
- Robot(Hi-Flex)
- Base/Medium/Full Configuration
- PoCL Full Configuration



Mini Straight SDR26



Standard MDR26



Mini Right Angle SDR26

PARTNUMBER REFERENCE

DT	## -	26P	##	XXX	/*	-*
----	------	-----	----	-----	----	----

Model name	Camera Link standard (Confirm)	Connector pole number	Length(m)	Connector (Camera - FGB)	Transmission type	Cable type
DT: Original product	CL: Non-PoCL PL: PoCL FC: Non-PoCL Full Configuration ※1 PF: PoCL Full Configuration ※1	26Pin	2-digit ※that are not 1m units 3-digit EX. 02=2m 018=1m80cm	SD : Standard - Standard MS :Mini - Standard MU :Mini L(Up) - Standard MD : Mini L(Down) - Standard SM :Standard - Mini Straight MM :MiniStraight - MiniStraight MUM : MiniL(Up) - MiniStraight MDM :MiniL(Down) - MiniStraight	/T : Standard ※2 -Blank : Hi-Speed	-S : Standard ※3 -Blank : Hi-Flex

※1. High Flexible Type Only

※2.Pl.s refer specification as Below

※3.Standard Type:non High Flexible Type

EX. DTPL-26P-02-MM/T

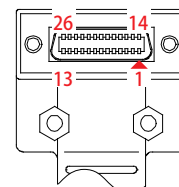
PoCL mini-mini 2m cable,standard type (non Hi-speed,non Hi-Flex)
connector:Camera:SDR 26(mini 26 pin) FGB:SDR 26 (mini 26 pin)

Specifications

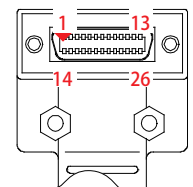
General Specification

Cable Type	Diameter	Cable Color
Normal speed	Φ 6.8 mm	Gray
High speed	Φ 8.3 mm	Gray
HiFlex/Nomal	Φ 6.8 mm	Black
HiFlex/High speed	Φ 8.2 mm	Black
HiFlex/Full	Φ 7.3 mm	Black

Mini L type Exit Direction



MU: Mini L type Up



MD: Mini L type Down

Cable Length vs Camera Link Frequency

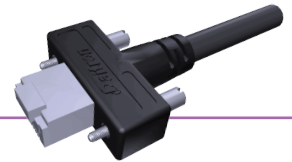
Frequency	Maximum Cable Length(index-value)			
	Standard Speed(/T-S)	High Speed(-S)	Full	PoCL Full
20M ~ 36M	10m	15m	11m	11m
37M ~ 56M	7m	12m	8m	8m
57M ~ 72M	5m	10m	5m	6m
73M ~ 80M	3m	5m	4m	5m
81M ~ 85M			2m	4m

※The maximum length is index-value,evaluate the sample before pureheshing.

※For value standard transmission, of high transmission, you will value non-bending, high-flexion common.

Cat.5e Cable

RoHS Compliant

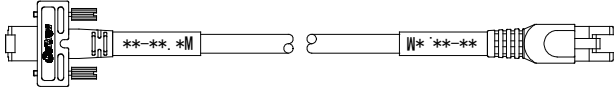


•Gigabit LAN (transmission speed 1Gbps) correspondence •Cable with high flexural shield

Specifications of Camera Cable

Order No.	Connection method	Camera Side	FGB Side	Diameter	
DTGE-8P5E(R)/S * * * -MR	Straight	Horizontal Thumb screws	RJ45 (shield)	Black: φ 6.7mm	
DTGE-8P5E(R)/C2- * * * -MR					2pairs crosses
DTGE-8P5E(R)/C4- * * * -MR					4pairs crosses

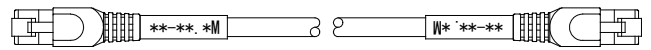
※***=Cable Length(Two columns of high ranks:m unit,low rank one column:cm unit)
Example:005=0.5m,015=1.5m



Specifications of Standard Cable

Order No.	Connection method	Connector	Diameter	
DTGE-8P5E(R)/S * * * -RR	Straight	RJ45 (shield)	Black: φ 6.7mm	
DTGE-8P5E(R)/C2- * * * -RR				2pairs crosses
DTGE-8P5E(R)/C4- * * * -RR				4pairs crosses

※***=Cable Length(Two columns of high ranks:m unit,low rank one column:cm unit)
Example:005=0.5m,015=1.5m



PoCL-Lite Cable

RoHS Compliant



•PoCL-Lite Cable(Confirm) •Characteristic Impedance 100+/-10 ohm
•Skew(within pair) 50ps/meter maximum

Specifications of Standard cable

Order No.	Camera Side	FGB Side	Diameter
DTPL-14P * * LL/T	PoCL-Lite	PoCL-Lite	Black: φ 5.3mm
DTPL-14P * * LM/T		Mini Straight	
DTPL-14P * * LS/T		Standard	

※**=Cable Length(The thing which is not a 1m unit does it with three columns.)
Example:02=2m , 018=1.8m

Specifications of Maximum length

Order No.	Camera Side	FGB Side	Diameter
DTPL-14P * * LL	PoCL-Lite	PoCL-Lite	Black: φ 6.2mm
DTPL-14P * * LM		Mini Straight	
DTPL-14P * * LS		Standard	

※**=Cable Length(The thing which is not a 1m unit does it with three columns.)
Example:02=2m , 018=1.8m

VISCA Cable

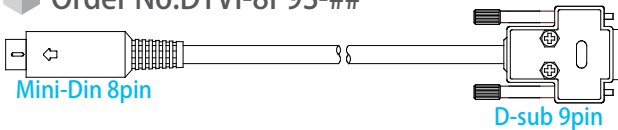
※VISCA is trademark registered of SONY.

RoHS Compliant

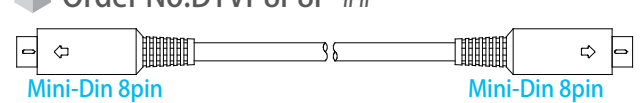


•length custom correspondence

Order No:DTVI-8P9S-##



Order No:DTVI-8P8P-##



Analog Camera Cable

RoHS Compliant



•Right Angre correspondence •Flexural cable correspondence

Specifications of Standard cable

Order No.	Shape	Figure turn	Flexibility	Pin Assignment
DTXC-12P * * S/1	Standard Mold	DD-T06017H		1 GND 7 VD output 2 + 1 2 V
DTXC-12P * * E/1	Standard Assy	DD-T06019H		8 GND 3 GND
DTXC-12P * * U/1	Standard L type(UP)	DD-T06021H		9 CL K output 4 V I D E O output
DTXC-12P * * D/1	Standard L type(Down)	DD-T06022H		10 GND 5 GND
DTXC-12P * * L/1	Standard L type(Left)	DD-T06023H		11 + 1 2 V 6 HD output
DTXC-12P * * R/1	Standard L type(Right)	DD-T06024H	◎	12 GND
DTXC-12P * * RT/1	Robot non-Shield	DD-T06025H	◎	
DTXC-12P * * RT-S/1	Robot Sheild	DD-T06026H	○	
DTXC-12P * * N/1	Assy Type(EIAJ)	DD-T06028H		1~8,9,12 Same as above 10 -WE N output 11 -TR I G input

※**=Cable Length(The thing which is not a 1m unit does it with three columns.) Example:02=2m , 018=1.8m
※There is the broadcast cable, L-form robot cable,flat model cable to fusion-bond.

Contact us
Daitron Co.,Ltd.
Image-Related Equipment Group Sales Promotion Dept.
M&S Company

6, Kojimachi 3-chome, Chiyoda-ku, TOKYO 102-8730, Japan
Phone:+81-(0)3-3264-0326 FAX:+81-(0)3-3221-7509
E-mail:camera-info@daitron.co.jp
URL:http://www.daitron.co.jp

Manufacturer
Daitron Co.,Ltd.
Specialized Equipment Factory
D&P Company

2-3-29, Nagaoka, Mizuho-cho, Nishitama-gun, Tokyo
190-1232, Japan
TEL+81-42-557-5711 FAX+81-42-556-0082

※A product name or the service name of other companies listed in the sentence are the trademake of the companies or registered trademarks.
※I may change the items mentioned without a notice for improvement.